



Invergordon

Facilities Description





Invergordon

The Semco Maritime yard in Invergordon is easy to access from the North Sea and provides upgrading, repair and newbuild services for semi-submersibles, jack-up rigs, platforms, vessels and modules. So far, the port has had more than 650 yard stays.

The purpose-built integrated deepwater facilities include 140,000 m² of dedicated laydown area, more than 400 metres of deepwater quayside and direct supply services for any rig projects.

Table of Contents

| | |
|---|----|
| Travel Access | 4 |
| Rig Travel Access | 5 |
| Berthing | 6 |
| Yard Services | 10 |
| Accommodation and Administration | 11 |
| Security and Safety | 11 |

TRAVEL ACCESS

Airport

Inverness airport

- Flights to London, Amsterdam and other destinations
- The airport is located 50 kilometres from the Invergordon service base
- It takes less than 1 hour to reach the service base by train from the airport (price 10 GBP one way)
- www.hial.co.uk/inverness-airport/

Aberdeen international airport

- Flights to London, Amsterdam, Paris, Copenhagen and other destinations
- The airport is located 200 kilometres from the Invergordon service base
- It takes approximately 3 hours to drive from Aberdeen airport to Invergordon service base
- www.aberdeenairport.com

Railway

Invergordon railway station

- The Invergordon railway station is located 300 metres from the service base
- Provides connections to the Inverness railway station, which has connections throughout the UK
- It takes 4.5 hours to reach the service base by train from Aberdeen Airport (price 45 GBP one way)
- www.scotlandrailways.com/

Road Access

- Invergordon is located approximately 40 kilometres north of Inverness and 200 kilometres north-west of Aberdeen.



RIG TRAVEL ACCESS

Access to the yard is through a sheltered channel. The pilot point is located 7 nautical miles from the yard, and it takes the rig about 4 hours to reach the yard from the pilot point.

Position F: Example of location of installation

Location A Invergordon:

144 nmi with an approximate tow time of 29 hours.

Location B Esbjerg, Denmark:

298 nmi with an approximate tow time of 60 hours.

Location C Bergen, Norway:

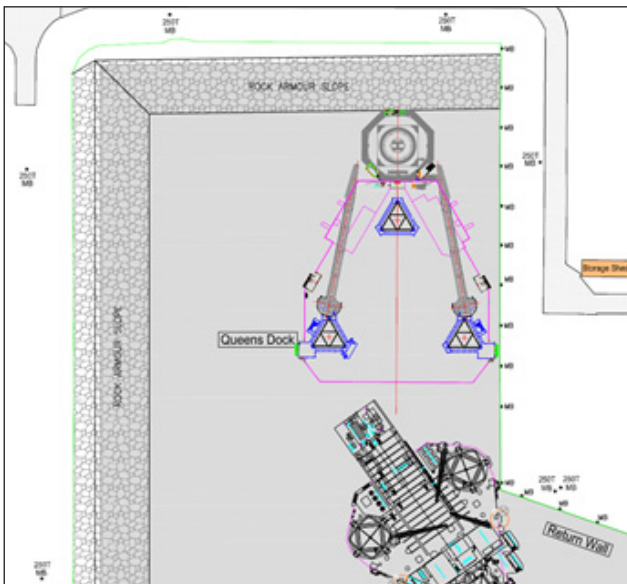
225 nmi with an approximate tow time 45 hours.



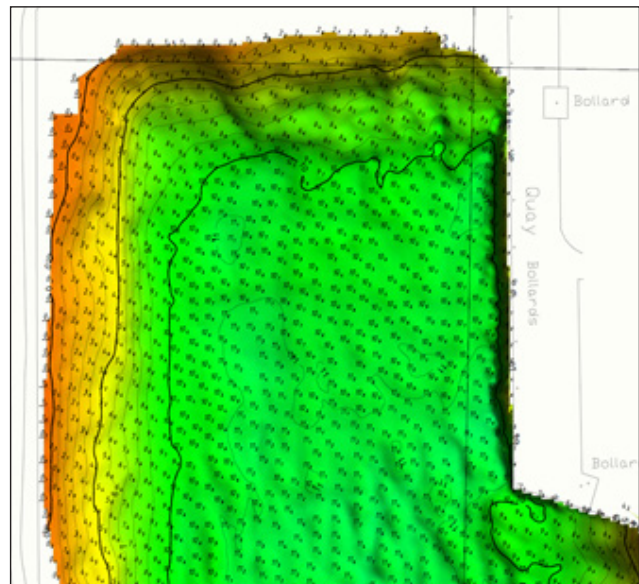
BERTHING

Queens dock

| | |
|------------------|--|
| Size | 150 m x 120 m |
| Depth | 12 m |
| Tide variation | 4 m |
| Mooring bollards | 6 x 250 t and 11 x 50 t |
| Water connection | Freshwater connection at quay |
| Water supply | Approximately 2 bar standard camlock connection (crossovers available) |
| Sewage | Grey water disposal as per IMO rules. Blackwater to holding tank on quay for disposal |
| Power supply | Shore power provided through generators |
| Access tower | 36 metre stair tower |



Drawing of Queens Dock with possible rig location



Bathymetric map of Queens Dock



Berth 1

| | |
|------------------|--|
| Quay length | 50 m |
| Loadout | 7t/m ² |
| Depth | Up to 5.5 m |
| Tide variation | 4 m |
| Quayside height | 1.5 m |
| Opening to quay | 20 m |
| Mooring bollards | 4x50t |
| Water connection | Fresh water connection standpipe with standard 2" camlock |
| Water supply | Approximately 2 bar |
| Sewage | Grey water disposal as per IMO rules. Blackwater to holding tank on quay for disposal |
| Power supply | Shore power provided through generators |

Berth 2-4

| | |
|------------------|--|
| Quay length | 288 m |
| Loadout | 20t/m ² heavy load pad |
| Depth | 8-14.5m |
| Tide variation | 4 m |
| Quayside height | 1.5 m |
| Opening to quay | 30 m |
| Mooring bollards | 5x200t and 15x50t |
| Water connection | Fresh water through standard 2" camlock connection |
| Water supply | Approximately 2 bar |
| Sewage | Grey water disposal as per IMO rules. Blackwater to holding tank on quay for disposal |
| Power supply | Shore power provided through generators |

Berth 5

| | |
|------------------|--|
| Quay length | 154 m |
| Loadout | Up to 20t/m ² |
| Depth | 14 m |
| Tide variation | 4 m |
| Quayside height | 1.5 m |
| Opening to quay | 50 m |
| Mooring bollards | 4x200t and 9x50t |
| Water connection | Fresh water through standard 2" camlock connection |
| Water supply | Approximately 2 bar |
| Sewage | Grey water disposal as per IMO rules. Blackwater to holding tank on quay for disposal |
| Power supply | 230V 50Hz and 415V 3ph |



Overview of berthing locations in Invergordon

YARD SERVICES

| | |
|--------------------|--|
| Waste oil handling | Local waste transfer and disposal stations within a distance of 10 km |
| Outdoor storage | 140,000 m ² |
| Indoor storage | Up to 4,000 m ² |
| Crane capacity | Up to 1,000 t |
| Tug assistance | Tugs available |
| Stair tower | 36 m free-standing stair tower |
| POB system | 24-hour POB access through yard (ISPS), via T card or electronically at rig |
| Lighting | Flood lights set up in all yard areas |
| Compressed air | Mobile diesel-powered air compressors available |
| Diesel fuel | MGO bunkering available directly at berths 2 and 3. All other berths are for vehicular tankers, whereas anchorages are by fuel barges |
| Workshops | Workshops available through contractors |
| Forklifts | Forklift trucks available in all sizes |
| Cherry pickers | Cherry pickers available in different sizes |
| Working hours | Work is allowed 24/7 |
| Hot work | Yes |
| Communication | Broadband and mobile connectivity |
| Heavy lift barge | Loading and unloading onto heavy lift barge is possible within the port limits of 38m water depth. |



ACCOMMODATION AND ADMINISTRATION



Accommodation

- Private housing and other lodging nearby can be rented through Semco Maritime or local agencies.
- Hotels and B&B are found in the surrounding area as well.
- The yard offers changing rooms and a canteen (up to 100 persons).
- The parking space on site has the capacity for approximately 200 cars.
- A larger car park is accessible.

Offices

- Up to 70 permanent PAX project office stations are available.
- Additional offices can be provided through our partners.
- Office facilities include meeting rooms, private offices and kitchen areas.
- Printers and copying machines can be provided at central locations according to project/client preferences.

SECURITY AND SAFETY: No Comprise – We Care

Security

Security is maintained through the following systems:

- The yard area is fenced in.
- Outside normal working hours, authorised personnel have access to identified areas through an electronic access control system.
- An external security company appointed by Port of Cromarty Firth controls and supervises the yard.
- Project-specific control including 24-hour POB access control and electronic security access systems.

Safety

- The yard is certified according to ISPS standards
- Fire extinguishers and fire hoses are located at and around the yard
- Response time for local fire department is 15 minutes
- Response time for minor local hospital is 15 minutes
- It takes about 30 minutes to drive from the yard to the regional hospital »Raigmore« in Inverness
- In case of serious emergencies, an air ambulance (based in Inverness) can land in the immediate vicinity

Semco Maritime is certified according to:

- DS/EN ISO 9001:2008 - Quality Management System
- DS/EN ISO 14001:200 - Environmental Management System
- DS/OHSAS 18001: 2008 - Occupational Health Management System ISO
- Achilles JQS - Certificate of Registration
- FPAL - Certificate of Registration
- Sellihca - Certificate of Registration

All certificates can be forwarded upon request.

Semco Maritime Ltd

Tern Place,
Denmore Industrial Estate
Bridge of Don
Aberdeen AB23 8JX
United Kingdom

Tel. +44 1224 702211

rigsales@semcomaritime.com
www.semcomaritime.com



    #SemcoNews